

# Workplace Health and Safety Fatality Report



## **WORKER CAUGHT IN CONVEYOR**

Type of Incident: Fatality

Date of Incident: April 13, 2007

**TABLE OF CONTENTS**

<b>SECTION</b>	<b>TITLE</b>	<b>PAGE NUMBER</b>
<b>1.0</b>	<b>DATE AND TIME OF INCIDENT</b>	<b>3</b>
<b>2.0</b>	<b>NAME &amp; ADDRESS OF PRINCIPAL PARTIES</b>	<b>3</b>
<b>2.1</b>	<b>Owner/Employer</b>	<b>3</b>
<b>2.2</b>	<b>Worker</b>	<b>3</b>
<b>3.0</b>	<b>DESCRIPTION OF PRINCIPAL PARTIES</b>	<b>3</b>
<b>3.1</b>	<b>Employers</b>	<b>3</b>
<b>3.2</b>	<b>Worker</b>	<b>3</b>
<b>4.0</b>	<b>LOCATION OF INCIDENT</b>	<b>3</b>
<b>5.0</b>	<b>EQUIPMENT, MATERIAL AND OBSERVATIONS</b>	<b>3</b>
<b>5.1</b>	<b>Equipment and Material</b>	<b>3</b>
<b>6.0</b>	<b>NARRATIVE DESCRIPTION OF INCIDENT</b>	<b>4</b>
<b>7.0</b>	<b>ANALYSIS</b>	<b>4</b>
<b>7.1</b>	<b>Direct Cause</b>	<b>4</b>
<b>7.2</b>	<b>Contributing Factors</b>	<b>5</b>
<b>8.0</b>	<b>FOLLOW-UP/ ACTION TAKEN</b>	<b>5</b>
<b>8.1</b>	<b>Workplace Health and Safety Compliance</b>	<b>5</b>
<b>8.2</b>	<b>Industry</b>	<b>6</b>
<b>8.3</b>	<b>Additional Measures</b>	<b>6</b>
<b>9.0</b>	<b>SIGNATURES</b>	<b>7</b>
<b>10.0</b>	<b>ATTACHMENTS</b>	<b>7</b>

## **SECTION 1.0 DATE AND TIME OF INCIDENT**

- 1.1 The incident occurred on April 13, 2007 at approximately 8:20 a.m.

## **SECTION 2.0 NAME AND ADDRESS OF PRINCIPAL PARTIES**

### **2.1 Owner/Employer**

- 2.1.1 Tiger Mushroom Farm (2005) Ltd.  
LSD SW-10-16-28 W4  
Nanton, Alberta  
T0L 1R0

### **2.2 Worker**

## **SECTION 3.0 DESCRIPTION OF PRINCIPAL PARTIES**

- 3.1 Tiger Mushroom Farm (2005) Ltd. was an operating mushroom farm which produced compost material for the growth of the mushrooms. This farm was first incorporated in 1979. The present owner took over operation of the farm in January, 2005. Operation of the farm was shut down in July 15, 2007.
- 3.2 The worker had been working as a farm worker for two years doing general cleanup. He had approximately 2.5 years experience working at mushroom farms in Alberta and British Columbia.

## **SECTION 4.0 LOCATION OF INCIDENT**

- 4.1 The incident occurred in the service/working area of the mushroom farm located at 26<sup>th</sup> Avenue approximately 2 kilometres south of Nanton, Alberta. The legal site description was LSD SW-10-16-28 W4 (Refer to Attachment A – Map).

## **SECTION 5.0 EQUIPMENT, MATERIAL AND OBSERVATIONS**

### **5.1 Equipment and Material**

- 5.1.1 The equipment involved in the incident was the mushroom tray line conveyor. The stages of the tray line process included tipping, filling, spawning, casing and pressing. The equipment was manufactured by Double T Equipment Manufacturing Ltd. of Airdrie, Alberta (Refer to Attachment B Diagram and Attachment C – Photograph 1).
- 5.1.2 The worker's clothes were caught in the gear teeth of the rollers of the conveyor located close to the compost press. There was no safeguard on rollers with gear teeth. Inspection of the equipment indicated there had been guarding in place which was

removed. The present owner stated that the safeguard had been removed before he bought the mushroom tray line. Manufacturer's specifications or specifications certified by a professional engineer were not available for the mushroom tray line at the site (Refer to Attachment C – Photographs 2, 3 and 4).

## **SECTION 6.0 NARRATIVE DESCRIPTION OF THE INCIDENT**

- 6.1 On April 13, 2007, at approximately 8:05 a.m. worker 1 started the roller conveyor of the mushroom tray line.
- 6.2 Worker 1 then walked to the feed end of the tray line and entered the tray line hopper.
- 6.3 At approximately 8:20 a.m. worker 1 heard worker 2 shouting.
- 6.4 Worker 1 got out of the tray line hopper and saw worker 2 standing near the press. Worker 1 ran towards the press and found worker 3 caught in the roller conveyor system.
- 6.5 Worker 1 and worker 2 immediately shut down the roller conveyor system. Worker 4, who was working nearby, called the owner who was at his residence on the farm.
- 6.6 The owner immediately drove to the facility and arrived at the scene within a few minutes. He saw worker 3 caught in the roller conveyor system and called 911.
- 6.7 At approximately 9:40 a.m. Emergency Medical Services (EMS), the Royal Canadian Mounted Police (RCMP) and the Fire Department responded to the site.
- 6.8 The worker 3 was pronounced dead at the site.

## **SECTION 7.0 ANALYSIS**

### **7.1 Direct Cause**

- 7.1.1 Worker 3 was fatally injured when his clothes became caught in the gear teeth of the rollers pulling him into the roller conveyor system.

### **7.2 Contributing Factors**

- 7.2.1 The rollers with gear teeth had no safeguards installed.
- 7.2.2 No hazard assessment was conducted to identify the potential or existing hazards associated with the operation of the mushroom tray line.

- 7.2.3 No training records were found to indicate that the workers were trained on the safe operation of the equipment.
- 7.2.4 The mushroom tray line was not equipped with a warning alarm to notify workers prior to starting of the equipment.

## **SECTION 8.0 FOLLOW-UP/ ACTION TAKEN**

### **8.1 Employment, Immigration and Industry; Workplace Health and Safety Compliance**

- 8.1.1 On April 13, 2007 at approximately 9:41 a.m., Workplace Health and Safety Compliance (WHSC) received an incident notification. WHSC arrived at the site at approximately 11:40 a.m. and commenced an incident investigation.
- 8.1.2 WHSC issued the following orders to Tiger Mushroom Farm (2005) Ltd.:
  - stop work order to provide safeguards to prevent workers from coming into contact with moving parts of machinery
  - conduct an incident investigation
  - hazard assessment, manufacturer's specifications and safety training
- 8.1.3 On April 19, 2007, WHSC met with the employer to discuss safeguards and requirements for compliance.
- 8.1.4 On April 23, 2007, WHSC reviewed and accepted the employer's documentation related to their incident investigation.
- 8.1.5 On May 7, 2007, a follow-up inspection was conducted to inspect the safeguards that were to be installed.
- 8.1.6 On May 9, 2007, WHSC met with the owner to discuss the inspection observations and areas of non-compliance.
- 8.1.7 On May 14, 2007, WHSC conducted a re-inspection of the worksite to evaluate the implementation of corrective measures to prevent a reoccurrence of the incident.
- 8.1.8 On June 8, 2007, WHSC reviewed and accepted the employer's work procedure for safe operation of the mushroom tray line.
- 8.1.9 On June 8, 2007, WHSC was notified by the employer that they would be shutting down the operation as of July 15, 2007.

8.1.10 On June 19, 2007, WHSC contacted the owner to confirm the shut down of the mushroom operation.

## **8.2 Industry**

8.2.1 On April 13, 2007, the employer stopped using the mushroom tray line until an incident investigation could be conducted and the unguarded section of the equipment could be guarded.

8.2.2 On April 13, 2007, the employer restricted all worker access to the unguarded sections of the mushroom tray line.

8.2.3 On April 23, 2007, the employer submitted the incident investigation report and complied with this order.

8.2.4 On May 9, 2007, the employer started installing permanent guarding on the mushroom tray line.

8.2.5 On May 16, 2007, the employer complied with the order related to safeguards.

8.2.6 On June 8, 2007, the employer provided WHSC with the work procedure for the mushroom tray line.

8.2.7 On June 19, 2007, the employer permanently shut down the mushroom tray line operation.

8.2.9 On July 15, 2007, Tiger Mushroom Farm (2005) Ltd. shut down all of the operations of this site.

## **8.3 Additional Measures**

8.3.1 No additional measures were taken.

**SECTION 9.0      SIGNATURES**

Original Report Signed  
Lead Investigator

\_\_\_\_\_  
Date

Original Report Signed  
Reviewer

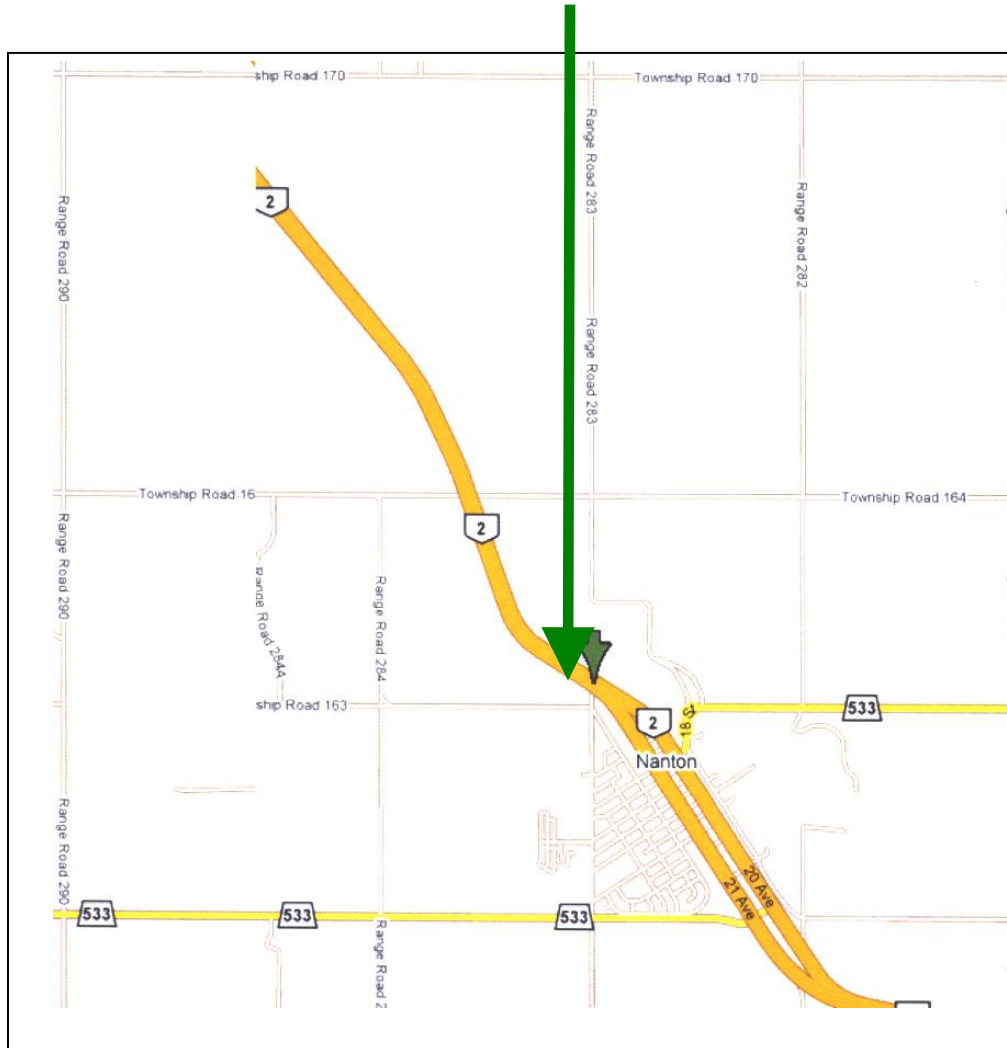
\_\_\_\_\_  
Date

Original Report Signed  
Regional Senior Manager

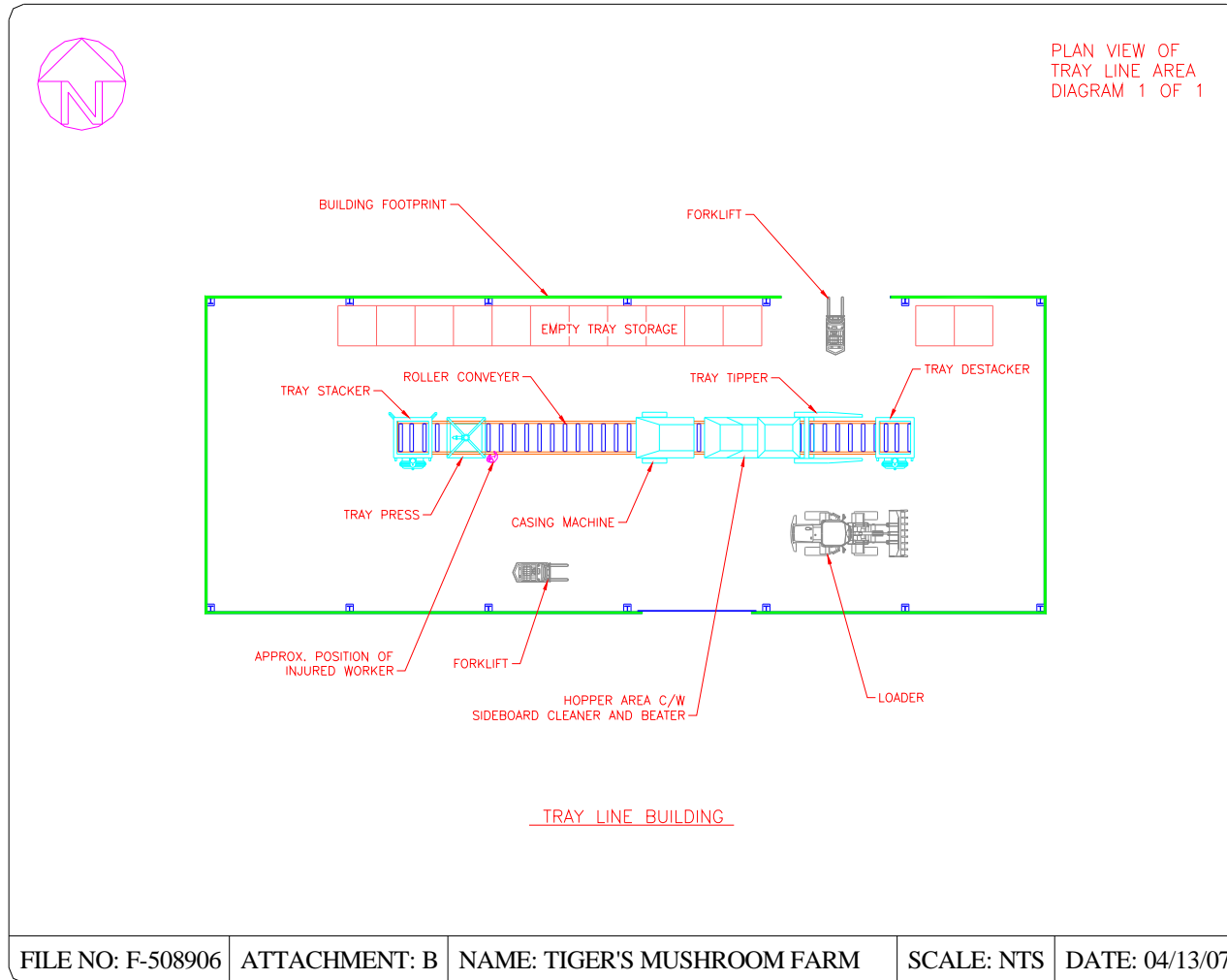
\_\_\_\_\_  
Date

**SECTION 10.0      ATTACHMENTS:**

Attachment A	Map
Attachment B	Diagram
Attachment C	Photographs



The green arrow shows the location where the incident occurred at Tiger Mushroom Farm (2005) Ltd. near Nanton, Alberta. The legal site description is LSD SW-10-16-28 W4.



Flow diagram of the mushroom tray line at Tiger Mushroom Farm (2005) Ltd. at the time of the incident.

Attachment C  
Photograph 1 of 4



Photograph 1: Shows the location where worker 3 was found

1. The mushroom tray line press
2. Clothing worn by worker 3 wrapped around the conveyor roller
3. Unguarded rollers with gear teeth



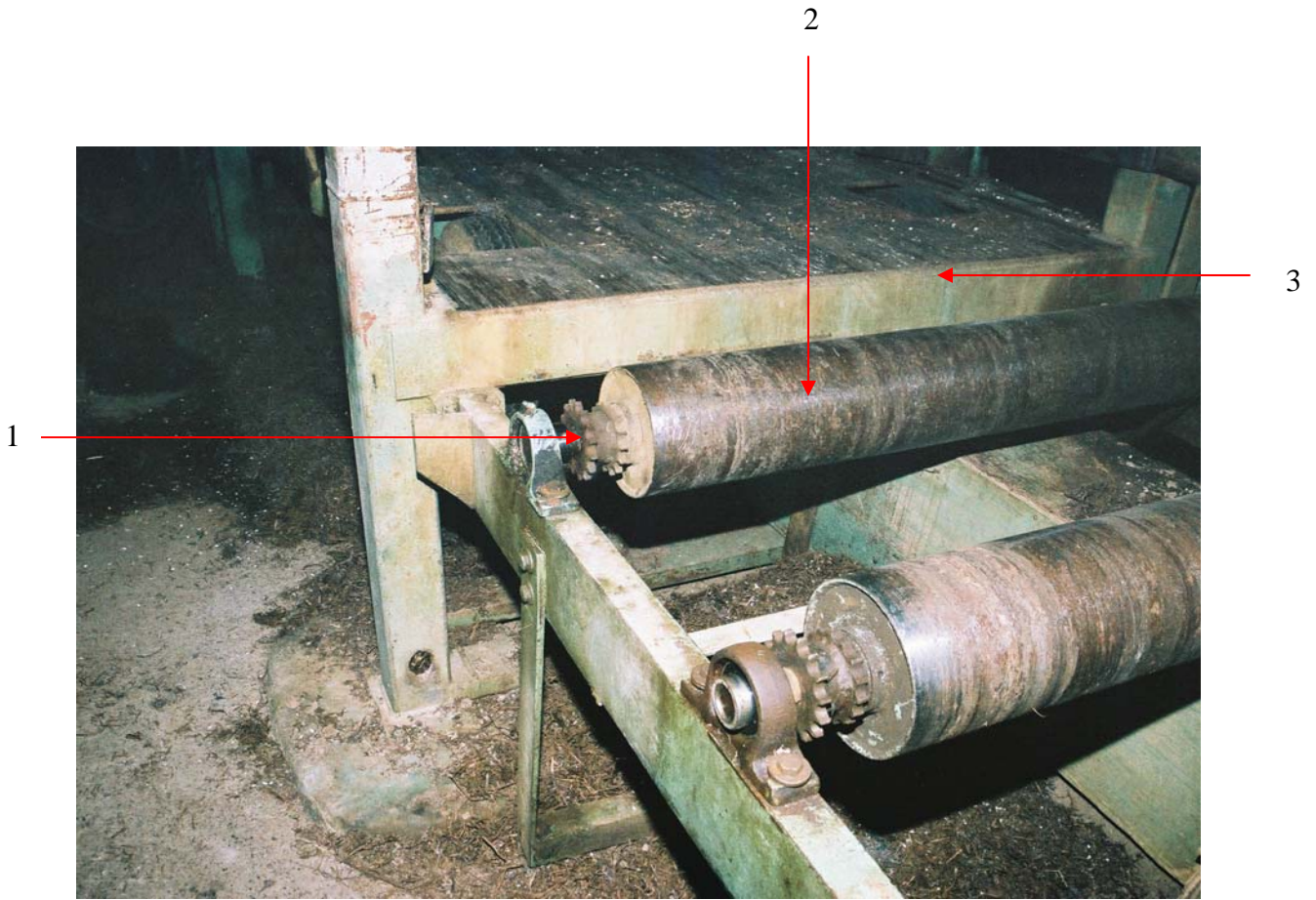
Photograph 2: Shows the press end of the mushroom tray line

1. The compost tray press
2. The location where worker 3 was caught and pulled into the unguarded rollers with gear teeth



Photograph 3: Shows an overview of the mushroom tray line where the incident occurred

1. The compost tray press end of the mushroom tray line
2. Compost tray press
3. Feed end of the mushroom tray line where the hopper was located
4. Location where worker 3 was caught and pulled into the roller conveyor system



Photograph 4: Shows the conveyor system unguarded rollers with gear teeth after the clothing of worker 3 was removed

1. The clothes of worker 3 were caught by these gear teeth
2. Roller
3. Compost tray press